

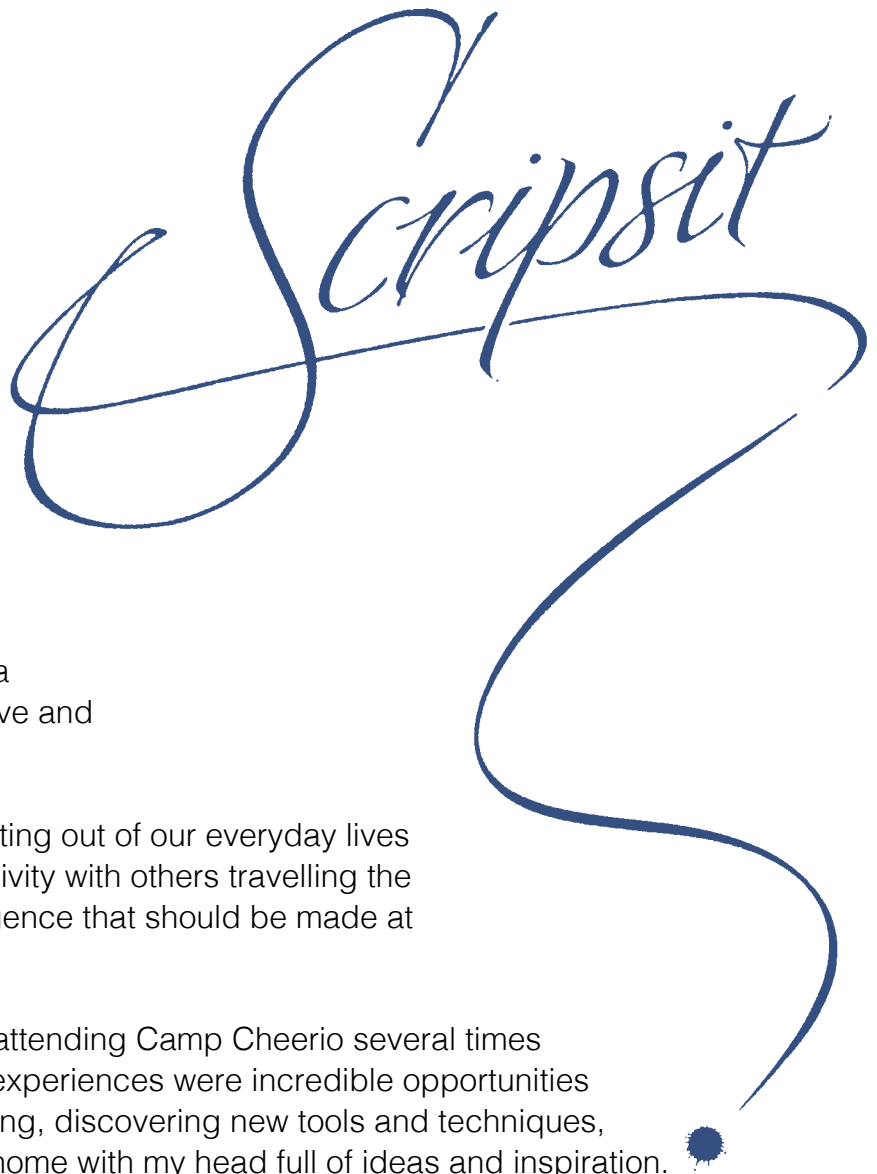
The background of the entire page is a photograph of a calligraphy workspace. It includes various calligraphy tools like pens and brushes, ink containers with different colored inks (red, blue, black), and a palette with watercolor-like washes. A spiral-bound notebook is visible on the right side. The title 'Scripsit' is written in a large, elegant, red cursive script, with a long, flowing tail that extends towards the bottom right. The word 'Retreats' is written vertically in a white, serif font on the right side. The volume and issue information is printed in a small, black, sans-serif font at the bottom left of the central white box.

Scripsit

Retreats

Vol. 37, No 2 | Washington Calligraphers Guild





The word retreat has a handful of meanings. It can be used as a noun or a verb. In this issue of Scripsit, I'm going to use it as a "place" – physical, mental, creative and nutritional.

The pleasure and privilege of getting out of our everyday lives and immersing ourselves in creativity with others travelling the same or parallel path is an indulgence that should be made at any opportunity.

I have had the great pleasure of attending Camp Cheerio several times and Letterforum once. Both (all) experiences were incredible opportunities for learning, sharing, and stretching, discovering new tools and techniques, meeting new friends, and going home with my head full of ideas and inspiration.

Kate Irwin, Editor

Volume 37, Number 2, 2015, ISSN 1530-2318. Scripsit is the journal of the Washington (DC) Calligraphers Guild and is among the many benefits available through membership. See www.calligraphersguild.org. Send inquiries and address changes to Sue Flory, WCG Membership, P.O. Box 3688, Merrifield, VA 22116-3688, USA. Both the cover and contents are fully protected by copyright and may not be reproduced without written permission. Publication of any article contained herein does not imply endorsement by the Washington Calligraphers Guild or its Board of Directors. To order additional copies of this issue, as well as selected past issues of Scripsit, see www.calligraphersguild.org/Scripsit.html. Designer/Editor Kate Irwin. ©2015 Washington Calligraphers Guild. All rights reserved.



CALLIGRAPHY &
BOOK ARTS RETREATS

NORTH CAROLINA

Cheerio Calligraphy Retreats are held twice a year on the breathtaking campus of YMCA Camp Cheerio in the Blue Ridge Mountains of North Carolina.

An easy drive from Winston-Salem, Charlotte, Roanoke and surrounding areas, it is a world away from life's everyday hustle and

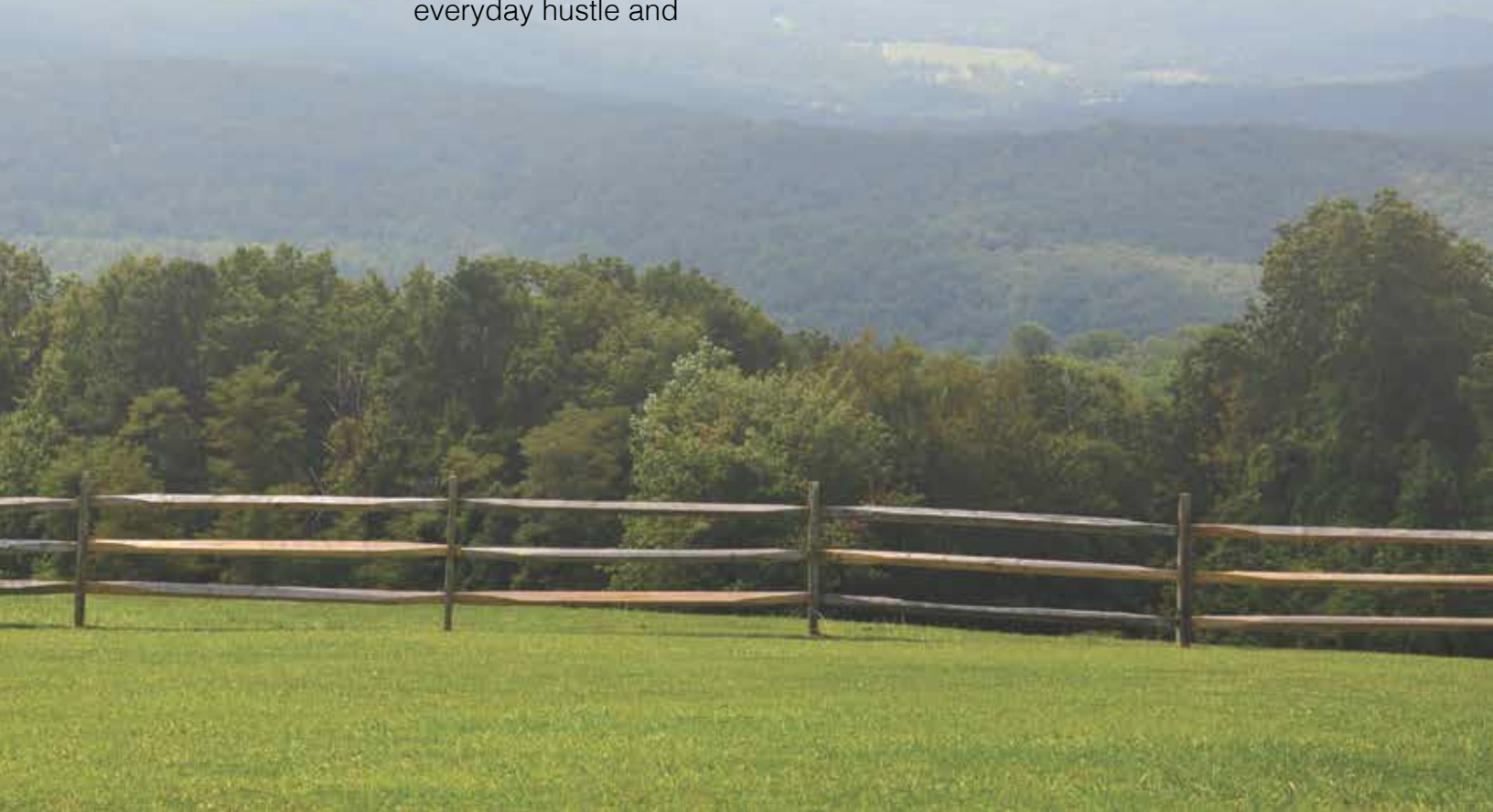
bustle with a stunning view and a special quiet that inspires a different perspective.

Spring retreats are in held May when green is creeping into leaves as the mountain temperatures warm the days and morning frosts are waning.

Fall retreats are in September and

October and the breadth of nature's palette is amazing!

Joyce and Jim Teta started Calligraphy Retreats at Cheerio in 1984 so that calligraphers could have an opportunity to study with internationally recognized scribes for an extended period of time at a reasonable cost. They have



hosted workshops with the worlds finest western calligraphic & book artists.

Cheerio faculty has included Thomas Ingmire, Ann Hechle, John Stevens, Georgia Deaver, Peter Thornton, Suzanne Moore, Nancy Culmone, Julian Waters, Sheila Waters, Brody Neuen-schwander, Denis Brown, Alice. Ewan Clayton, Carl Rohrs, Monique Lallier, Thomas Hoyer, Laurie Doctor, Hazel Dolby, Tom Perkins, Gaynor Goffe, Christopher Haanes, Anne Cowie,

Yves Leterme & Yukimi Annand.

Attendees have travelled from all over the world to this week-long retreat (England, Ireland, Iceland, Germany, Norway, Belgium, Italy, China, Korea, Japan, Australia Argentina, Brazil, Puerto Rico, Canada, Latvia, Bermuda Guatemala, South Africa—and pretty much from every state in the US.

A good many “students” have attended Cheerio for



Cheerio Classroom Building

several, if not many, years—once is never enough—they just can't stay away! Whether it is lettering or book arts you take a piece of Cheerio with you when you leave.

Everyone who has attended once, had the pleasure of meeting the kind and generous John Ebel, who attended every retreat until 2013. He was a gentle and constant presence.

When asked “what one or two words would you say summed up your thought or feelings describing your Cheerio experience?” Sentiments like “feels like family,” “magic,” “all time favorite retreat,” and “intimate” are shared repeatedly.

The classroom is in a large, two-story, open room, building with tables that can be arranged by the instructor and/or students. The tables allow for individual or communal work areas with room to spread out tools, supplies, and works in progress. Great natural light and, when weather permits, open windows and doors add energy to the creativity.

Classes are small, approximately 20 students, bringing people together, facilitating sharing and instruction. You get to know each other—by the end of the week you feel like family.

Students are provided with a supply list for the week—and often bring tools that they



“Cheerio is my school - where play and practice carry equal weight and reward. The sharing and critique are priceless.”

—Manuel Murillo
17 Cheerio retreats

“I found Cheerio online. The communal sharing and learning pulls you along - up and out.”

—Sandy Wagner
25+ Cheerio retreats

“Cheerio is familiar, feels like home. I always know it will be wonderful.”

—Anne Cowie

For more information on
Cheerio Calligraphy Retreats

www.calligraphycentre.com

have and are comfortable working with—you just might need it.

John Neal Bookseller brings supplies and many other goodies on Sundays and Wednesdays, making for a great opportunity to purchase what you need as well as what you might want! It is a welcome treat to see, touch, and learn about papers, brushes, books, and more.

Monday classes begin with morning class at 9am until to noon. Lunch/break is noon to 2pm. Friday is departure day and class end ends at noon with departure by 2:30. There



are evening programs that are rich and varied with instructor presentations and talks, as well as show and tell.

Access to the classroom is available 24 hours a day. More often than not, students “work” late into the night with inspiration spilling forth from the day.

Accommodations are comfortable and a short walk to the classroom. You have a choice between the “dormitory”, a semi-private room, or a private room.

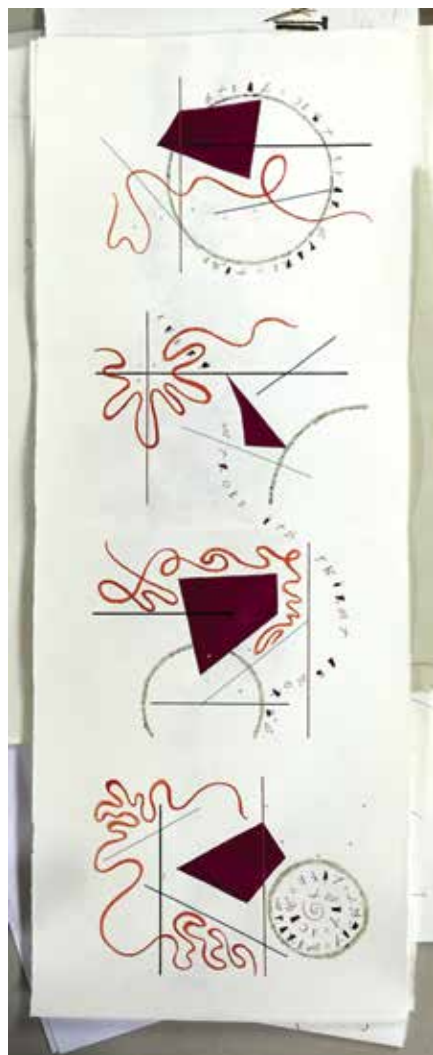
Since I attended Cheerio in 1995, the food has



evolved from “camp food” to delicious, gourmet fare. Martyn Armstrong, the chef, along with his wonderful kitchen staff prepares a varied menu of mouth watering meals for every palette and taste.

Because I live just 20 miles from Cheerio, I was able to visit and speak with some “students” as well as the instructor for that week, Thomas Ingmire.

Thomas shared that Cheerio is a favorite venue of his at



which to teach. That it allows a blending and stretching of ideas—music and rhythm—where questions are asked and answered.

The first time I attended Cheerio, I was unbelievably excited and nervous. Sunday evening during introductions, I discovered I was in the company of calligraphers whose name’s I’d read about and seen in books and on calligraphic pieces I admired—I felt I was in over my head.

I know that, over the years, I have not been alone in my apprehension. I’ve learned from others of their feeling anxious, nervous, and overwhelmed; and of the kindness and camaraderie of others attending that settled their fears, shared inspirations and that they have headed home feeling like their head has expanded with ideas and techniques, that they learned more than they could have imagined, and on their drive or flight home begun, working on figuring out a way to go to Cheerio again!

Cheerio



CHEERIO ARTIST RETREAT

A companion to the Calligraphy Retreat, and an option if the Calligraphy retreat is full, is an artist retreat for calligraphers, artists painters, sketchers, writers, and mixed media artists are welcome.

It’s all open studio where you can enjoy the company and camaraderie of other artists. You may bring whatever projects and supplies that you want to work with for this week. No specific instruction is provided. However, there are scheduled discussion times and sharing times.

Regular studio hours are 9am- noon and 2-5pm with the studios available for 24 hours a day if you want to work other times.

Along with the studio space, dorm accommodations and 3 over -the-top meals per day are provided in the fee.

.....

LETTERS *California Style*

CALIFORNIA

Letters California Style is a retreat for artists and calligraphers, and sponsored by the Society for Calligraphy.

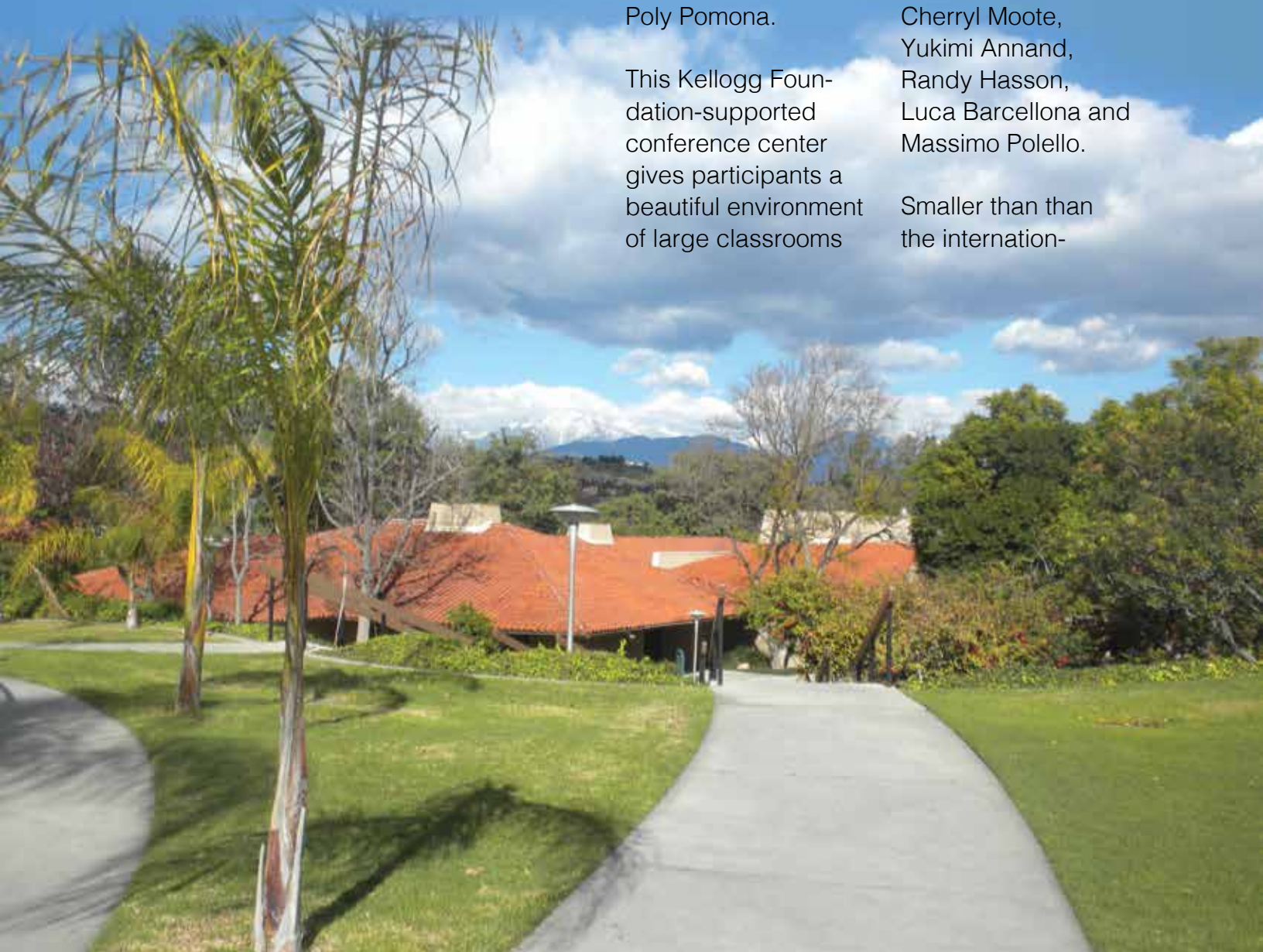
It provides education through lectures, exhibits and classes specializing in letter arts, design, painting, paper and book arts. It is held at the Kellogg West Conference Center on the campus of Cal Poly Pomona.

This Kellogg Foundation-supported conference center gives participants a beautiful environment of large classrooms

in close proximity, hotel-like lodging rooms with TV, phones, wifi, and daily maid service.

We invite teachers from around the world that have included such notables as Thomas Ingmire, Ewan Clayton, Peter Thornton, Carl Rohrs, Lisa Engelbrecht, Ward Dunham, Nancy Culmone, Pat Blair, Yves Leterme, Cherryl Moote, Yukimi Annand, Randy Hasson, Luca Barcellona and Massimo Polello.

Smaller than than the internation-



al conferences, Letters California Style presents a faculty of 10 teachers and 120 participants. This means our class size is a maximum of 12, providing both teacher and student the best experience.

Letters California Style is held each year in February, President's Day weekend, from Friday through Monday. This year, 2016, will be our 11th annual conference.

Students may arrive Thursday afternoon or Friday morning before classes begin. Classes run 6 hours on Friday, Saturday and Sunday, and half a day on Monday. During free time, students can work in their classrooms into the wee hours, if they like.

Small class sizes allow for great, one-on-one student/instructor interaction, inspiration, and exploration.

The Kellogg West Conference Center is small and all classrooms, program areas, dining room, and guest accommodations are close and easily accessible.

Classrooms are light and airy and each student is provided with a large work table and ergonomic chair.

Morning classes begin at 9 am and run until noon. Afternoon classes start at 1:30 and go until 5pm. Dinner is at 6pm followed by social time, presentations, and mini-classes.

Two hour mini classes are available outside of regular classroom times for a small extra fee. They are available to participants as well as those not participating in the retreat.

Paper & Ink Arts provides a "store" each day for class supplies as well as "art



2016 Faculty

Christopher Haanes
"Vitalize Your Hand"

Barry Morentz
"Gothic Splendor"

Linda Schneider
"Calligraphic Line Doodles to
Designs: Designing with
Inspiration"

Suzanne Moore
"Elucidare"

Julie Gray
Lettering in 3D!

Barbara Close
"Brush-a Brush-a Brush-a"

De Ann Singh
Too Much Fun Journaling!!!

Susan Longerot
"Explorations of Book
Structures and Surface
Design"

Jane Shibata
Spice It Up! With Colored
Pencils

Carrie Ima
"Dancin' Pen"





necessities” to take home when you leave.

John Neal Bookseller has served as our supply store in the past and continues to send gifts for our participants.

Some extras to enjoy are a participant exhibit - a great opportunity to share and learn. A Scribe Store selling art and handmade items from Society for Calligraphers members.

There are two retreat “packages” from which to choose as well as accommodations that allow for private rooms or roommates. All meals are buffet and are wonderful (really, we mean wonderful).

The energetic volunteers that plan and execute this retreat are a great team, happily working together making each conference better than the last.

What makes Letters California Style the warm and welcoming event that it is, has always been its wonderful participants. We come together each year and celebrate the reunion of “our tribe.” We joyfully meet to create joy in the making of art - the glue that holds us together.



More information and registration details can be found at:

www.societyforcalligraphy.org

Carrie Imai, Director
Letters California Style



A unique calligraphic retreat and experience are Calligraphy Cruises hosted by Holly Monroe. Each cruise is a 7-day get away is an exciting mix of lettering, art, and adventure. Calligraphy Cruises are a wonderful way to get your “calligraphy fix” and share the trip with a spouse, partner, or friend!

In 2013 the cruise island hopped through the Western Caribbean. We Departed from Fort Lauderdale, Florida and stopped at Half Moon Cay, Bahamas; Georgetown, Cayman Islands; Cozumel, Mexico; and Key West, Florida.

In 2014 the destination was Alaska. We first toured Seattle (Space Needle, Chihuly Garden and Glass, Pike Place Market, Bus tour, Dinners out on the town and much more! On the cruise we stopped in Juneau, Glacier Bay, Ketchikan, Sitka, Vancouver, BC.



After settling in to your room, the first evening aboard ship includes introductions, social time, and a presentation for the upcoming week. Then there's time to set up your workstation and get your nibs wet. Historically, the first day at sea is a 6-hour class time.



Classes are held each day in a comfortable classroom with individual tables for student work areas. Daily class schedules fluctuate between 2 and 6 hours depending on the day, to allow for ports of call. Formal instruction times totals 20 hours along with additional free time for artistic experimenting, exploration, and projects. Access to the classroom is available during free time and evenings—whenever you're inspired—and is secure so supplies and artwork do not need to be gathered up at the end of each class.



Instruction is provided by calligrapher/artist Holly Monroe, sometimes in collaboration with another artist or calligrapher. Abstract wall painter, Gary Lord, taught in 2014 with students' final projects combining lettering and painting techniques.

Ship accommodations are very comfortable and offer several options for rooms, meals, and entertainment. Sightseeing at each port of call can be enjoyed on your own or as a group. Most stops offer

excursions, (for additional costs), that can often times be an experience of a lifetime – whale watching, snorkeling, historical sights, hiking and more.

Future cruises are in the planning stage! Trip/destination requests, sign-up and suggestions can be made at Letters@HollyMonroe.com. You can sign up for her eNewsletter updates at www.hollymonroe.com/contact.php. Consider a cruise for your a calligraphic adventure!





The MIDWEST Art and Lettering Retreat was conceived with the intention of bringing a time-extended, focused workshop to the Midwest area of the United States.

Small class size and the quiet atmosphere of the Carlton College Campus sets the stage for focusing on finding your own voice and expressing yourself in your personal artistic style.

Sitting quietly, surrounded by acres of arboretum, Carleton College was selected because of

the beautiful campus, air-conditioned classrooms and accommodations.

Students stay in Davis Residence Hall or townhouse units. Rooms in a townhouse are offered on a limited basis and for a small additional cost per night. Housing for an extra night stay on Sunday with checkout on Monday is available for an additional fee (no additional meals are included).

Commuting, rather than staying on campus, is allowed. Meals are not

included in this option but may be purchased individually at the dining hall.

The campus dining hall is catered by the award-winning food service company, Bon Appetit, and offers a wide variety of choices including vegetarian and gluten-free options.

For eight years, MIDWEST Art and Lettering Retreat has been making it possible for artists to get away from their daily obligations, work on their artwork in a quiet setting, and find inspiration to create

MINNESOTA





under the guidance of a master teacher.

The very real fact of being out of your “daily space” and in a sharing environment adds a dimension to your work and play. Being with others is a catalyst event that generates more creative possibilities than if each of

us worked alone. As Steve Jobs stated, “The total is greater than the sum of the parts.”

MIDWEST Art and Lettering Retreat includes 4 full days of classes and meals from Thursday breakfast to Sunday lunch.

Attendees are at liberty to enjoy the beautiful campus and have access to

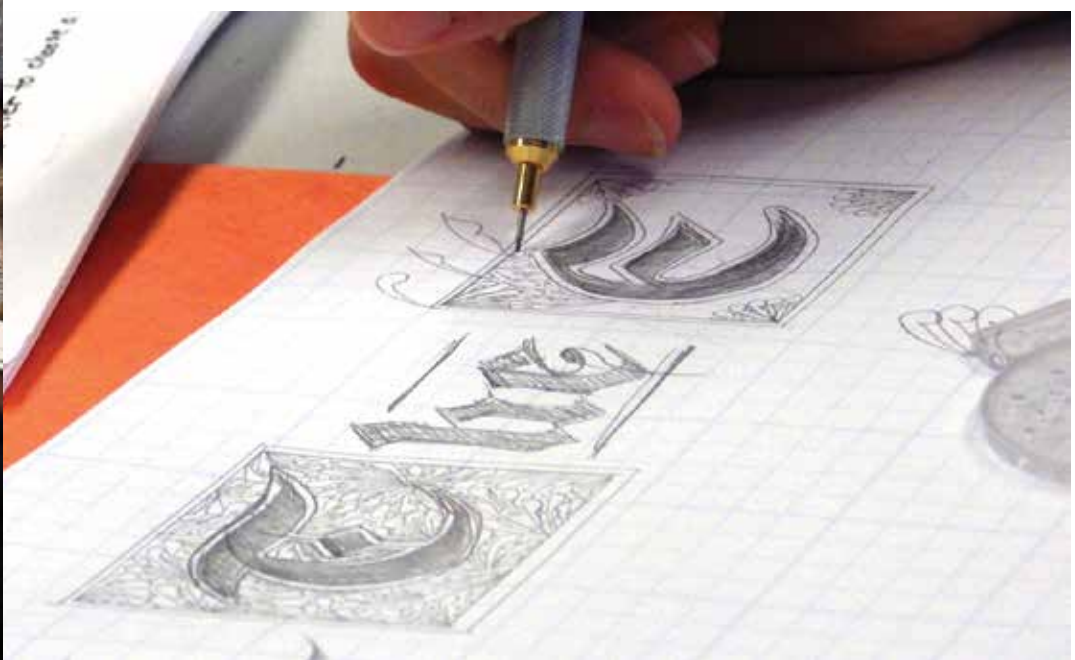
the extensive athletic facilities

Students select one class for the retreat. Classes begin each day at 9am with lunch break from noon until 2pm. Classes resume for the afternoon at 2:00 pm and run until 5:00 pm. There may be optional activities planned for some evenings.

We offer a mix of lettering and general

(non-lettering specific) classes. Participants select one class from the classes offered. An option for independent self-study is available with space to pursue your own art exploration without an instructor.

Supply lists are provided by the instructors. Wet Paint Artist Materials from St. Paul MN is the official art supply store for the MIDWEST Retreat. They will provide an easy means for you to order from them before the retreat with a discount and have it delivered into your hands when you arrive on campus. Wet Paint will also have a “mini” art store available on campus during our retreat.



The retreat is open to anyone who would like to attend, (membership in the Minnesota Colleagues of Calligraphy Guild is not required) and welcomes calligraphers and artists working in various visual arts disciplines.

This year's MIDWEST Art and Lettering Retreat is August 11 to 14, 2016.

This year's instructors include: Diane Culhane, Bob Schmitt, And Amity Parks

MIDWEST has also designed a retreat package for anyone interested in having a space to work on



artwork of their choice. You would plan your own schedule. You can join other retreat goers for meals and social times. This option includes a single room in the air conditioned residence hall, meals, and your own area in the

classroom designated for "a retreat within the retreat."

Be a part of midwest art and lettering retreat add your creative energy to the mix we brew up during the exciting four days in August!



For more information on Midwest Art & Lettering Retreats email:

midwestartand
lettering@gmail.com

LAKE LOUISE

MINNESOTA

Lake Louise Letters began in the early 1990's at a cafeteria table at the International Conference, held that year at St. John's in Minnesota. Sherri Keisel and Peter Thornton were discussing various retreat destinations and wishing there was a location closer than Cheerio for folks to go, possibly even within Michigan.

Millie Janka, was also in the Midland guild, suggested a Methodist church camp in northern Michigan, where she and her pastor

husband spent time in the summer. Technically on Thumb Lake in Boyne Falls, the camp and surrounding area had been likened to Lake Louise in Banff, Canada for so long that the camp, dating back to the 1930's was named after it.

In the beginning years, Sherri and Peter team-taught, holding two sessions as they were so popular and filled so quickly. In latter years, Sherri brought in other instructors; Michael Clark, Randy Hasson, Mike Gold and Judy

Melvin, Georgia Deaver and Rosie Kelly, to name a few.

Lake Louise has traditionally been held during the latter part of October, when the fall color is at its peak. It's breathtakingly beautiful, but the spirit of Lake Louise is what draws people back again.

Imagine six colorful autumn days in a spacious and sunlit lodge, nestled in the beautiful northern Michigan woods, on the shores of



a crystal clear lake. Now imagine yourself with these same six uninterrupted days of instruction and guidance by great instructors and the opportunity (minus kids, dogs, well-meaning spouse and daily obligations!) to totally immerse yourself in art, working anytime day or night. This is what Lake Louise is all about, giving you a chance to unwind and

play to your heart's content in a creative and comfortable environment that is sure to inspire. Your only interruptions are meals and sleep-even these are optional should the spirit move you!

Newly renovated semi-private or private rooms with a vanity sink, convenient and centrally located bathrooms with showers, kitchenettes on each floor, roaring fires in the gathering rooms at night. Acres of wooded paths to wander along the lakeshore, not to mention incredible star-gazing at night. No light pollution here!!

The retreat starts with a Sunday, 4:00 arrival time and runs through the following Friday



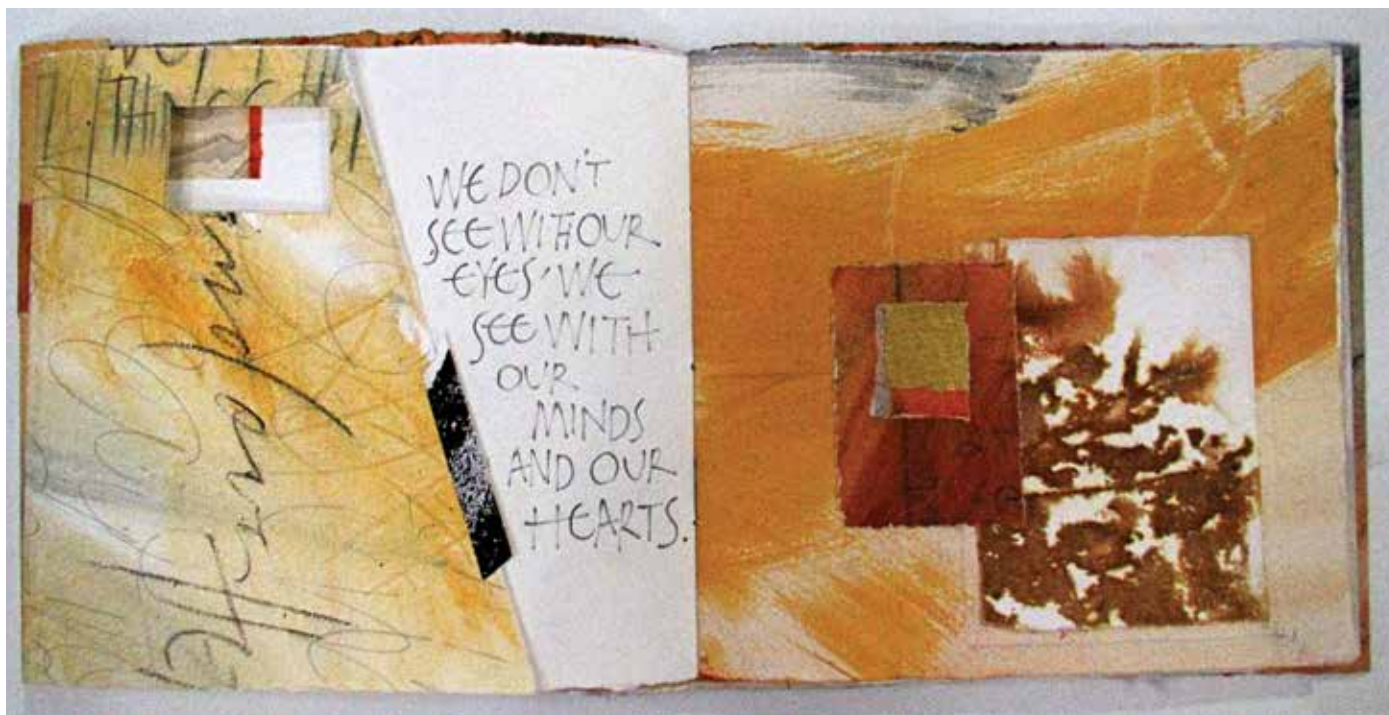
noon. Sunday involves check in, picking up supplies (many times I have larger supplies like paper shipped to the camp ahead of time), unpacking and settling in. A special welcome dinner is provided by the facilitator. Official class days are Monday through Friday noon.

The day begins with breakfast at any time of your choosing prior to class start time of 9:00. This is the only meal that is DIY, all

others are prepared and served by the staff. It was started as a cost savings several years ago and was very successful.

Morning class begins at 9:00am. There is a group gathering in the great room for meditation/readings/light yoga and stretching/flute and drums/grounding exercises/breathing. This really depends on the instructor but it's all about starting the day in a positive, open way and usually





...its a family reunion of sorts, it's as if you just stepped out for a few minutes and can pick up a conversation right where you left off a year ago. There's a feeling of family, sharing and building up of each other. These are the things that bring people back year after year.

includes some info on what we'll be working on that day. Class begins.

Lunch is from 12:00-1:00 and served by the kitchen staff. After lunch there is time for a walk in the woods, a brief nap, reading, or artwork.

Afternoon class runs from 1:00pm-4:00pm. Dinner is at 6:00 and is served by staff. Students also have the option to sign

up for an evening out, sampling some the local fare in nearby Boyne Falls or Petoskey. It's highly recommended that people take advantage of the area. Petoskey is well worth the trip, with great restaurants and shopping, not to mention its location on beautiful Traverse Bay.

Evening presentations are generally planned for some but

not all evenings and may include slide presentations, movies relating to our field of study or demos by both students and instructors, who are always exceedingly generous with their time.

It's not uncommon for lots of students to work late into the evening hours and the workshop space is available for use 24 hours a day for work-on-your-own time.

2016 Info

The dates for this year's retreat, A Gathering of the Muses, 2016, will be held October 23-28 with our guest instructor, Jacqueline Sullivan. Details as to class specifics are in the works, with brochures going out by request in the spring. If you would like to be put on the mailing list, please send a request to Karen Vosburg by phone or email at 269-217-5209. Email kenzi73@gmail.com



GHOST RANCH

Literally Letters is a week-long calligraphy program that convenes yearly in June or early July at Ghost Ranch, New Mexico. Set in the spectacular landscape which inspired Georgia O'Keeffe and countless other artists, the family oriented Ranch provides a variety of unique opportunities for program participants, including horseback riding, hiking, swimming, 24 hour library, as well as a children/teen program. Indeed, it is not uncommon for Literally Letters students to be ac-

companied by husbands, wives, children, grandchildren, parents. Although from the outset the aim of the program was to offer calligraphy instruction, the Literally Letters curriculum offers courses that are related to lettering such as book-binding, painting, abstract mark-making, art journaling, solar etching.

Founded by Alice Blue in the early 1980's, Literally Letters has enjoyed a veritable "who's who" of distinguished instructors, some of whom include: Marsha and Larry Brady. Alan Blackman,

Barry Morentz, Paul Maurer, Nancy Culmone, Fran Sloan, Susan Skarsgard, Mark Van Stone, Annie Cicale, Anna Pinto, Laurie Doctor, Thomas Ingmire, Carl Rohrs, Douglas Boyd, Carrie Imai, Barbara Close, Yukimi Annand, Bob Phillips, Judy Melvin, Eliza Schulte, Kristen Doty, Peter Thornton, Sharon Zeugin, Sherrie Lovler, Louise Grunewald, Laura Wait. After Alice retired in the mid 1990's, Nancy Culmone led the program for over 15 years until handing over the reigns to Sharon Zeugin in 2010.

NEW MEXICO



Most remarkable about the program—a characteristic which sets it apart from other conferences—is the fact that all classes offered during the week are held in a large pavilion perched on a mesa overlooking the Ranch. The communal atmosphere afforded by such close proximity seems to outweigh any of its downsides, which in addition to noise levels, can include heat, dust, wind and even a bird's nest! Another unique

aspect of the Literally Letters program is it's relaxed pace. Classes are held between 9 am and 12 with afternoons free for resting or enjoying any of the myriad activities available on the Ranch. Most LL participants appreciate the free time to head back to the Pavilion to work on projects begun in their classes or share techniques with each other. After dinner, students return to the Mesa for evening presentations by faculty, or a participant show

and share opportunity. The week culminates in a final "show and share" to which the entire Ranch is invited.

As a program participant, you have the choice of a range of housing options at Ghost Ranch. From rustic (campground) to hotel-like comfort. Most accommodation packages include cafeteria dining, or you can buy "a la carte" meals. Travel to and from the Ranch is up to Literally Letters participants individually and can include shuttle service from the Albuquerque to Ghost Ranch, or renting a car. It is important to work out travel logistics with the Ghost Ranch office upon registration. Summer weather is variable in Northern New Mexico, and it is advisable to include comfortable clothes that can be layered. Good walking shoes are vital for navigating the Ghost Ranch terrain.

The 2016 Literally Letters faculty line-up is particularly impressive. From as

far afield as Tasmania, Australia, Vashon Island, Washington, to nearby Denver and Durango, Co, the teachers are not only top in their field, but love to share their knowledge with students of all levels. New to Ghost Ranch this year is Bailey Amon, who is originally from Austin, Texas and now lives in Denver. She will be offering a class that ranges from traditional to modern pointed pen techniques. Bailey's success as a business woman and artist, her social media expertise and finesse—and her warm spirit of generosity—will be an inspiration to her students. Another Ghost Ranch newbie, but master in the field of calligraphy, is Gemma Black. A distinguished "Honored Fellow" of the UK CLAS program, Gemma has been on the faculty of numerous international calligraphy conferences and offers her students years of broad edge pen experience as well as in depth expertise in mixed

media art and book-making. She is excited to teach “the Versatility of Versals.” Louise Grunewald, a veteran Literally Letters instructor, continues to offer a unique and fresh approach each time she teaches in the upper pavilion. She is excited to be offering a course specifically developed for Literally Letters this year called, “Finding the Sweet Spot: Inspiration Meets Design.” Another Ghost Ranch returnee instructor is Suzanne Moore whose distin-

guished art career includes work on the St. John’s Bible, as well as books and art included in a number of public and private collections. Her warm, gracious, “down to earth” approach invites students of every level to challenge themselves in new and exciting ways in her classes. She will be teaching a new class designed for Literally Letters called “Landscape, Language & Letters: Landscape as Inspiration in Lettering Design.

Consider joining the Literally Letters Program at Ghost Ranch this year for an experience of a lifetime.

For more information:

www.ghost ranch.org/instructors/sharon-zeugin

